

A Mahindra Group Company



GREEN HOMES

Responsible Buildings for Sustainable Living



Home. A playground for your children. A treasure trove of memories for your family. A dwelling to enjoy the beauty of nature, shielded from the harsh environment outside. An investment for your future generations.

But today the homes we live in are not only jeopardizing the future of our children but posing a grave threat to the future of our first home. Our planet.

Current human development trajectories are exceeding the earth's resource base and its ability to replenish those resources. Natural habitats are fast losing out to this unplanned, uncontrolled 'grey' development that is bursting at its seam. Habitat destruction can have a more immediate and disastrous effect on certain localized areas and species, leading to impacts which are altering the earth's systems.



The costs of realty are escalating beyond monetary realms as they are responsible for –

65%
of all energy consumption

30%
of waste output each year

30%
of all raw material usage

39%
of greenhouse gas emissions

12%
of potable water usage

This 'eco-footprint' can only increase with the large population growth predicted to occur.



The natural question is what can we do to secure the future of our children and our planet?

One of the most natural answers is to settle for nothing less than a home which is built to foster the fragile relationship between your needs and the need of the planet, a home which harmonizes elegant living and environmental concerns.

Responsible Foundations

At Mahindra Lifespace Development Limited (MLDL), the real estate and infrastructure arm of Mahindra Group, we recognize our tremendous responsibility in positively contributing to sustainable living.

As a path-breaking construction firm, Mahindra Lifespaces realizes that significant gains can be made in efforts to combat global warming just by building more responsibly.

We have therefore embarked on a mission to make all our future residential buildings green. For us the term "Green Building" refers to a holistic approach to design construction. Our 'Go Green' mission resulted in MLDL applying for CII-IGBC Pre-certification for four projects and signing an MOU with CII-GBC for feasibility studies for all on-going projects.

alternative THINKING

THE MAHINDRA APPROACH TO SUSTAINABILITY

Today, as we and our world grapple with emerging issues such as climate change, energy, food and water shortages, accelerated loss of biodiversity, persistent poverty and an ever-widening gap between the haves and the have-nots, the need for Alternative Thinking is imminent.

We at Mahindra have been practicing Alternative Thinking across various disciplines and it has been an active endeavour to integrate it in our ethos.



Environment Friendly Landmarks

We are constantly relooking the way we build, and in the process have built a reputation of not just creating buildings but nurturing living, breathing, healthy lifespaces. Every home at every project site is part of an environment friendly neighbourhood.



Built Green

The construction phase of a building consumes 20% of the total energy consumption, but we have innovated our living spaces to be more sustainable by re-thinking the conventional concepts of construction.

Our projects are built using environmental-friendly technology, utilizing recycled material right from the internal roads to the rooms and incorporating other environment conservation techniques like topsoil preservation during landscaping etc.

But this is only part of the picture since more than 80% of the total energy consumption takes place during the lifetime of buildings, i.e. when energy is being used for heating, cooling, lighting, cooking, ventilation and so on.

It is here where you can accrue maximum savings because our buildings are designed to operate green. This means that our projects



consume
less water



optimize
energy
efficiency



conserve
natural
resources



generate
less waste



provide
healthier
spaces



Mahindra Splendour has been already rated as India's 1st platinum rated Pre-Certified Residential green building under IGBC's Green Homes Rating System.



What makes us greener than the other side?



sustainable locations

Basic amenities like shops, schools, markets, banks, medicals, restaurants, hospitals and public transit facility etc. are within 1000 meter radius from all our sites. This not only helps you cut down travel time and fuel costs but also vehicular emissions.



energy efficient

Investment in your new home will commence accruing returns from day one as you start saving on energy costs.

Large windows stream in daylight and cheer, while energy efficient utilities like lifts, lighting, and pumps etc. cut your electricity bill along with environmental costs.



better ventilation

More openable window space ensures that you start each day with a breath of fresh air.



healthy indoors

In every Mahindra home, air quality is given the utmost importance and we use only Low Volatile Organic Compound (VOC) content paints and adhesives. Insulation and sealants provide improved moisture management and enhance occupant productivity.



rainwater harvesting

At a Mahindra home you can leave behind the woes of water shortage. All our sites ensure efficient water supply, thanks to an integrated rainwater harvesting system with ground recharge facility, and a efficient storm-water management system .



water treatment

In your home no wastewater will ever go to waste as all our sites have in-house grey water treatment systems. Gardening and toilet flushing needs are taken care by the treated grey water. This helps reduce the dependence on potable water supplied by local municipal bodies and helps you contribute towards the larger goal of water conservation.



special needs

Care has been built into the design of every Mahindra site; especially for the elderly and the physically challenged. Special facilities like a ramp in common entrance area, toilet facilities in common area etc. are included to accommodate the special needs of its special residents.



charging your car

Buildings by Mahindra Lifespaces incorporate future ready technology for its eco-conscious residents. All of you with electric vehicles can avail the charging facility for such vehicles in the parking bay, which covers a maximum of 3% of the total parking.



top soil preservation

As you enjoy the lush landscaping, share a small secret with your friend or children. The soil you are on is the very soil that was there before the construction began. All the landscaping at every site is done from the stockpiled top soil dug up during the foundation stage of the project. This soil is excavated and preserved for future landscaping.



alternative materials

As you drive through the site it will be over roads that have a smaller carbon footprint. All internal roads including the car park area at the Mahindra Royale, Pimpri and Mahindra Eminent, Goregaon sites are made from alternative material like HVFAC (High Volume Flyash Concrete).



place for waste


Throw away your worries of managing domestic waste. A solid waste management system is in place to ensure segregation of organic and inorganic wastes. Organic waste will be treated to generate manure for gardening. Whereas inorganic waste will be handed over to municipal corporation.




Home Green Home

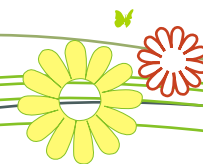
When you make a Lifespaces apartment/tenement your home, you will find all the guidance and tips required to utilize the green design features within the apartments/tenements. These feature better housekeeping tips, energy saving techniques, storage spaces for recyclables, proper monitoring of water and electricity consumption, etc.

Our creations have not just set the benchmark for refined living, but also ensured that the environment at large is protected and preserved for the future generations.

Upto
30% 
more energy efficient
than conventional buildings

Upto
25% 
Savings in water consumption

This translates to less energy consumption and lower electricity bills throughout the life of the building.





Through simple shifts you can add greater savings to those that have already been built in to your Mahindra Lifespaces home.

Green and sustainable living is just a lot of common sense. There are many small things you can do in your day-to-day activities which will make a big difference to your savings and reduce the cost to the planet.

Small Steps that can make a Big Difference



energy

01



water

02



products

03



commute

04



kitchen

05

01

Energy Savers



Use CFL lamps wherever possible, as they consume 75% less energy and last about 10 times longer than incandescent bulbs.

Turn off the lights every time you step out from a room.

Switch off your computer and other electrical devices when not in use.

Leave enough space between your refrigerator and the wall to allow proper air circulation.

Regularly monitor your water and energy usage through the meters provided, and set saving targets.

Always operate the washing machine on full load.

Instead of using electric dryers, dry your clothes naturally.

In case of window repairs, use the same glass currently installed.

Install BEE Star rated electrical fixtures which are more energy efficient.



02

Water Savers



Restrict the use of potable water to drinking and cooking

Fix leaking taps and ensure that they are fully closed when not in use.

Give preference to plants that consume less water over those that need more.

Ensure periodic maintenance of the Sewage Treatment Plant.

03

Buy & Dispose Responsibly

Use recycled and recyclable products wherever possible

Prefer locally sourced products.

Reduce dependence on plastic products.

Buy only CFC free air conditioning systems, refrigerators and refrigerating units.

Segregate your waste before disposal to facilitate recycling and reuse.



04

Green Commuting

Avoid using a vehicle for short distances. Walk, it's good for the planet and for your health too.

Be part of car/van pools.

Choose public transport over private vehicles.

Invest in an alternative fuel vehicle.



Remember, little things go a long way. In fact, when millions of people remember millions of little things, it adds up to a big change.

05

Kitchen Wise



Use Microwave Ovens. They use only 1/3rd to half as much energy as conventional electrical stoves.

Remember to cover the pan while cooking.

Use gas burner at moderate flame settings to conserve LPG.

Segregate dry and wet kitchen waste.



Mahindra Chloris, Faridabad



Mahindra Aqualily, Chennai



Mahindra Royale, Pimpri, Pune



Mahindra Splendour, Bhandup(W), Mumbai

The next time
you choose a home,
remember that
you are also choosing
to make a huge
difference to the planet.

Choose well.
Live well.





Mahindra Litespace Developers Ltd.

(Formerly known as Mahindra Gesco Developers Ltd.)

Corporate Office: Mahindra Towers, 5th floor, Worli, Mumbai - 400018

Tel: 022-33273000 / 39493300 Fax: 022-24975084 www.mahindralifespaces.com

*Printed on
environment friendly
FSC certified paper.*



Mixed Sources

Product group from well-managed
forests and other controlled sources
www.fsc.org Cert no. SQ5-COC-100104
© 1996 Forest Stewardship Council